

An aerial photograph of Tokyo, Japan, featuring a dense urban landscape with numerous skyscrapers and residential buildings. In the background, the iconic Mount Fuji is visible, its peak partially covered in snow. The Tokyo Tower is also prominent on the right side of the image. The sky is a mix of blue and grey, suggesting an overcast day.

otonomo

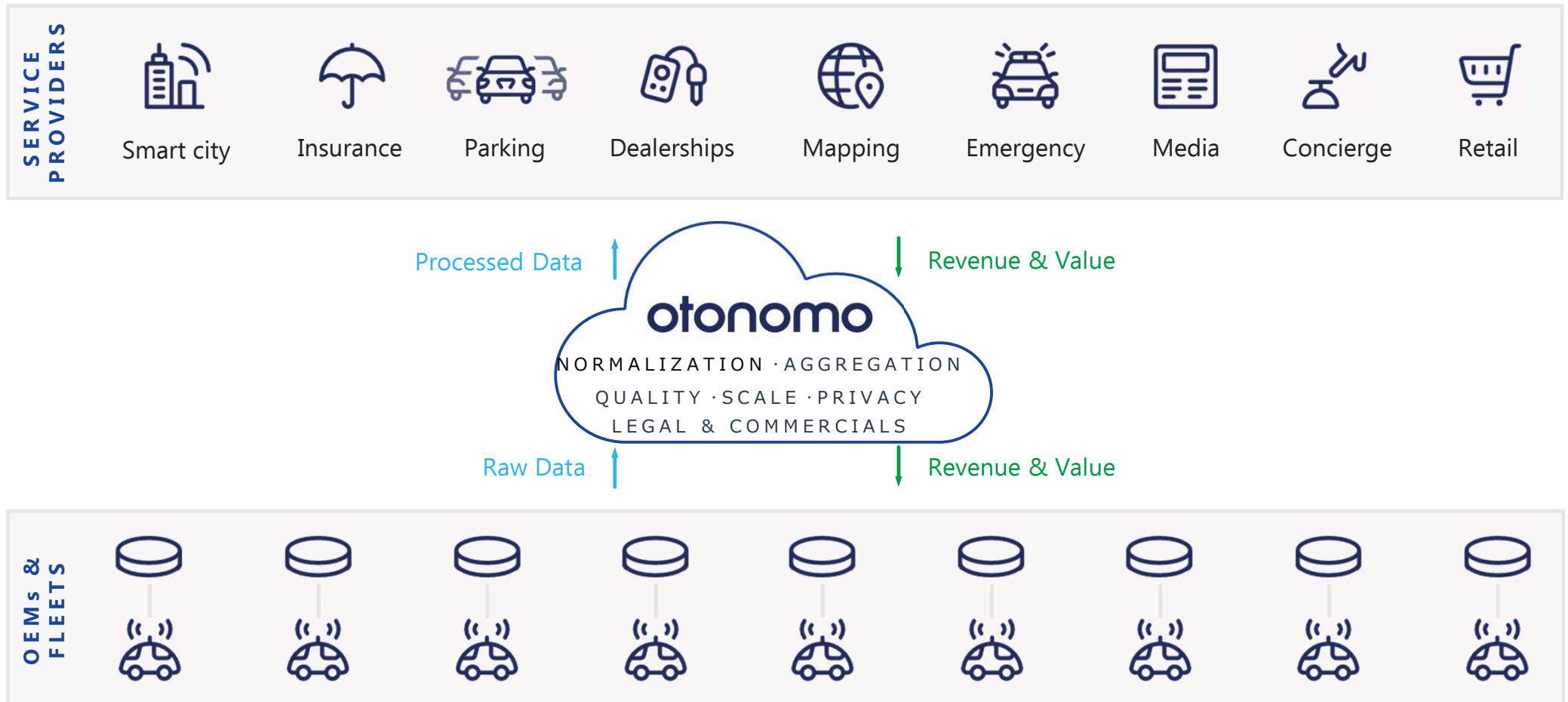
AUTOMOTIVE DATA SERVICES PLATFORM

AMIR FREUND, CHIEF STRATEGY OFFICER

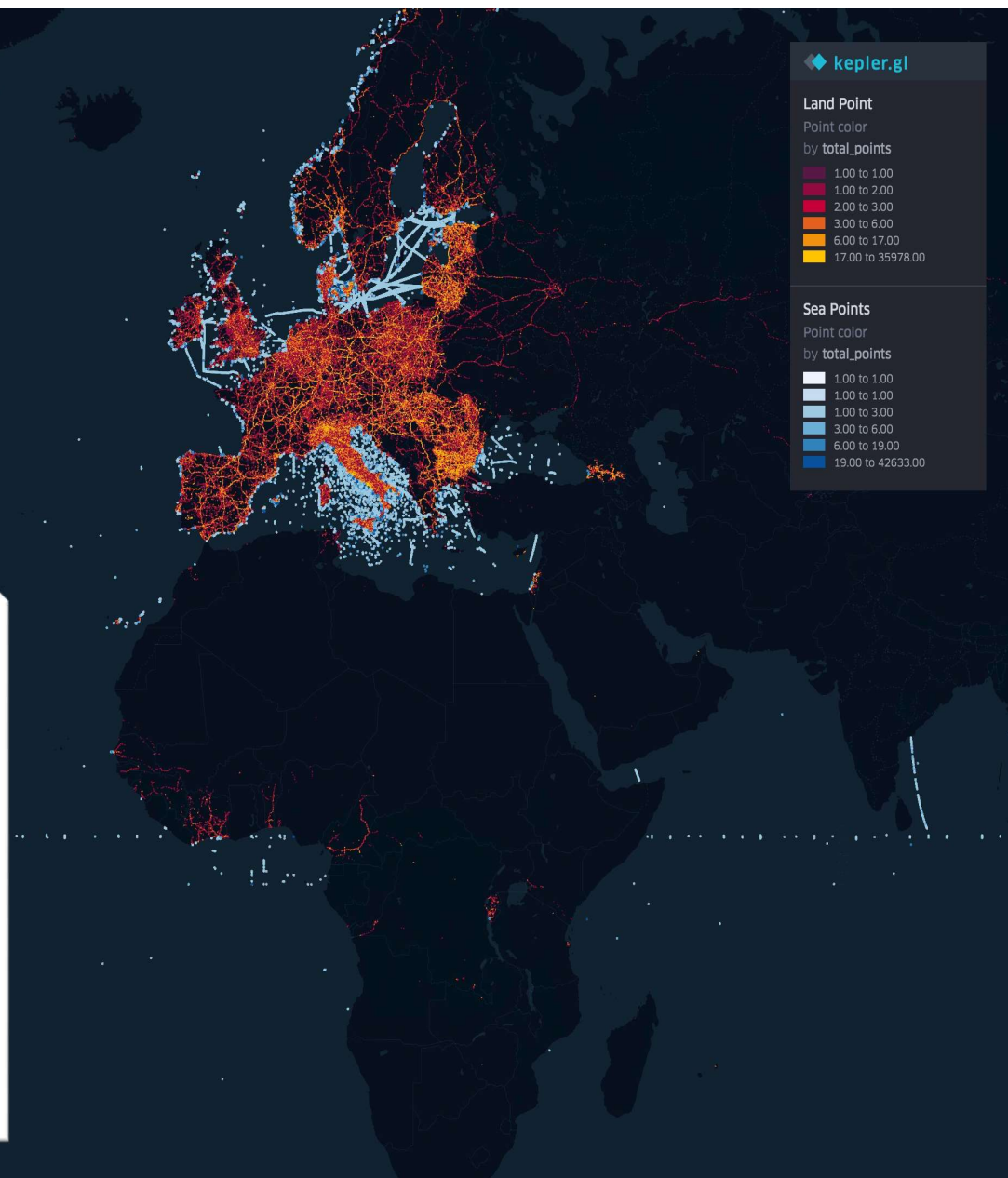
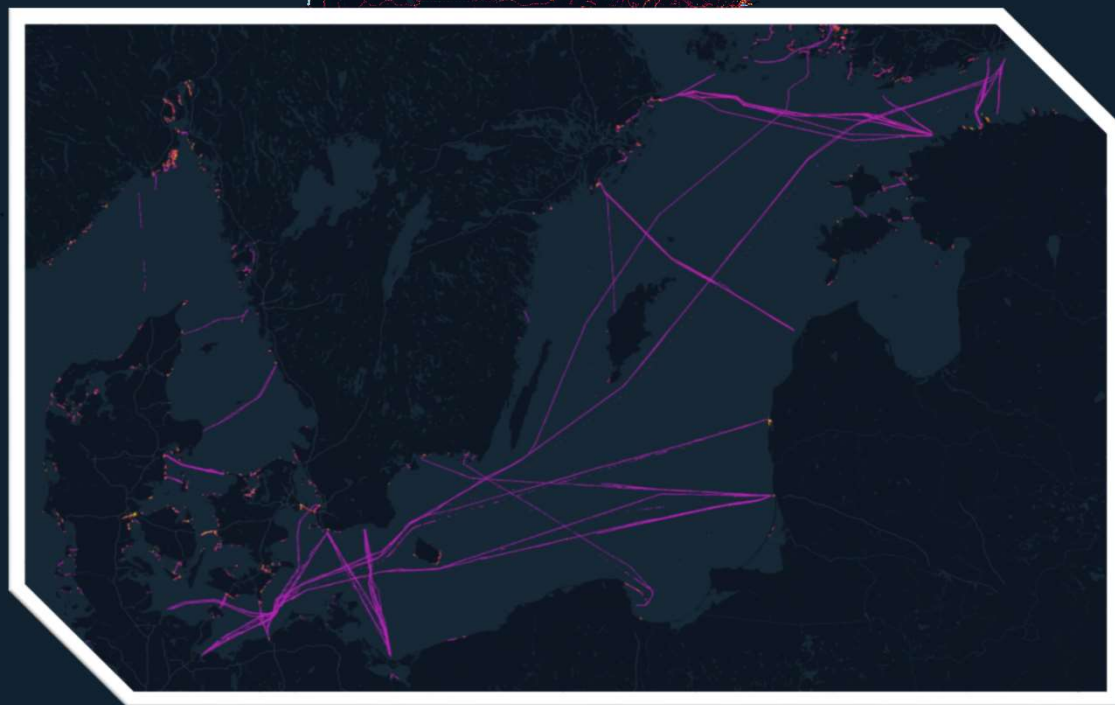
amir@otonomo.io

CONFIDENTIAL

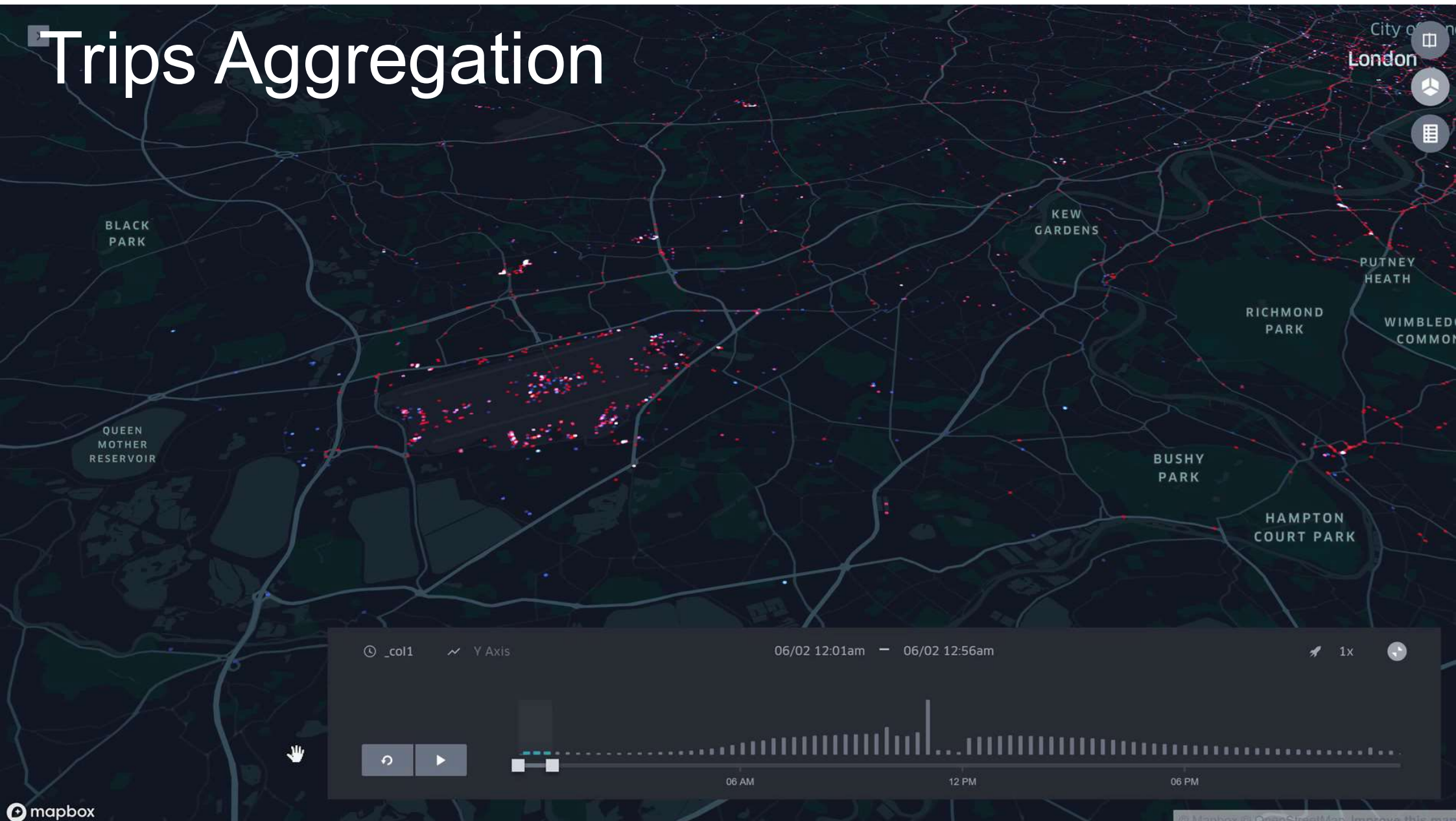
Automotive Data Services Platform



Quality Monitoring



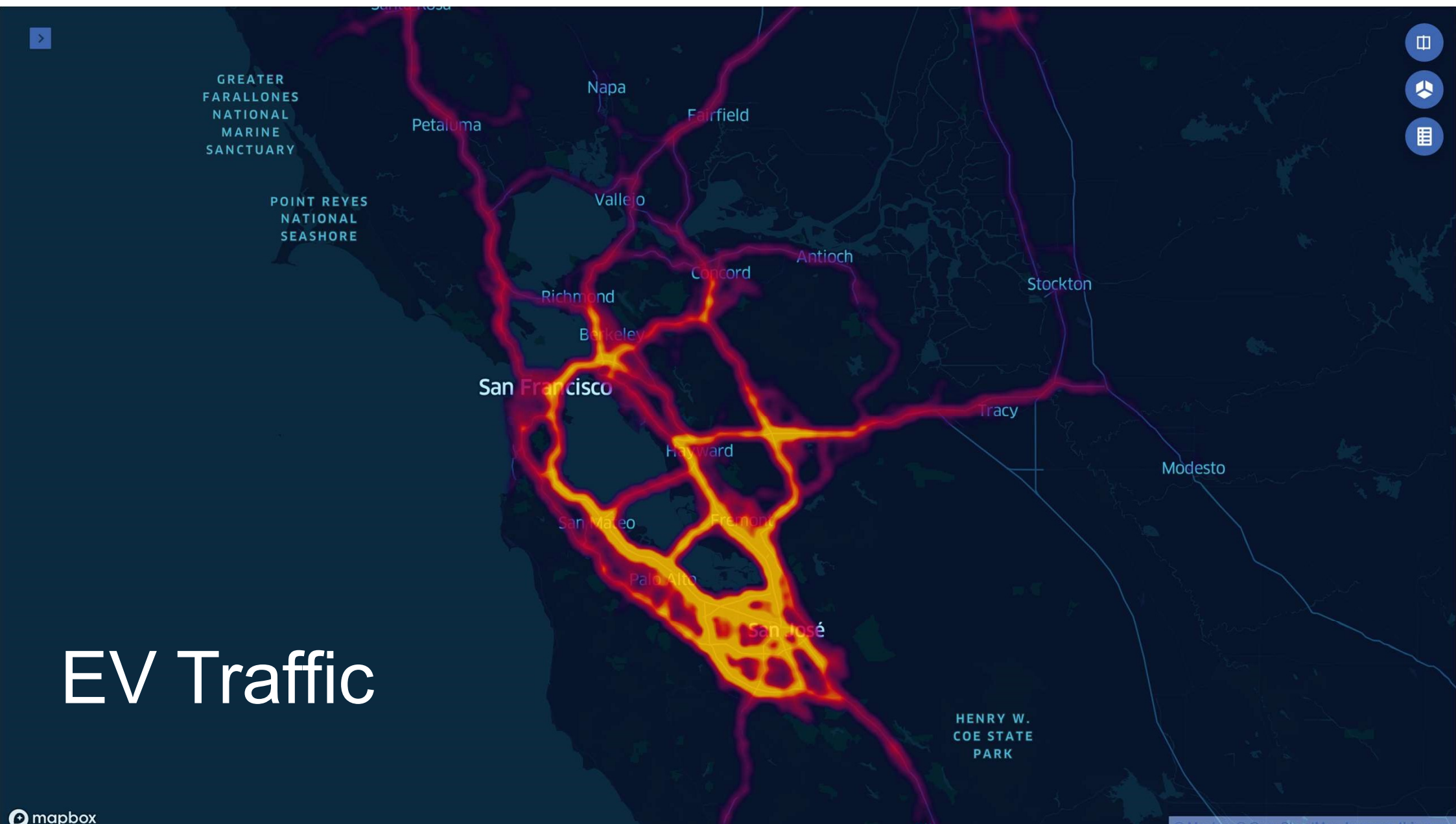
Trips Aggregation



Road Signs



EV Traffic



Untitled map
3 views

All changes saved in Drive

Add layer Share Preview

☒ Charging-Location-2.csv

☒ Styled by cars

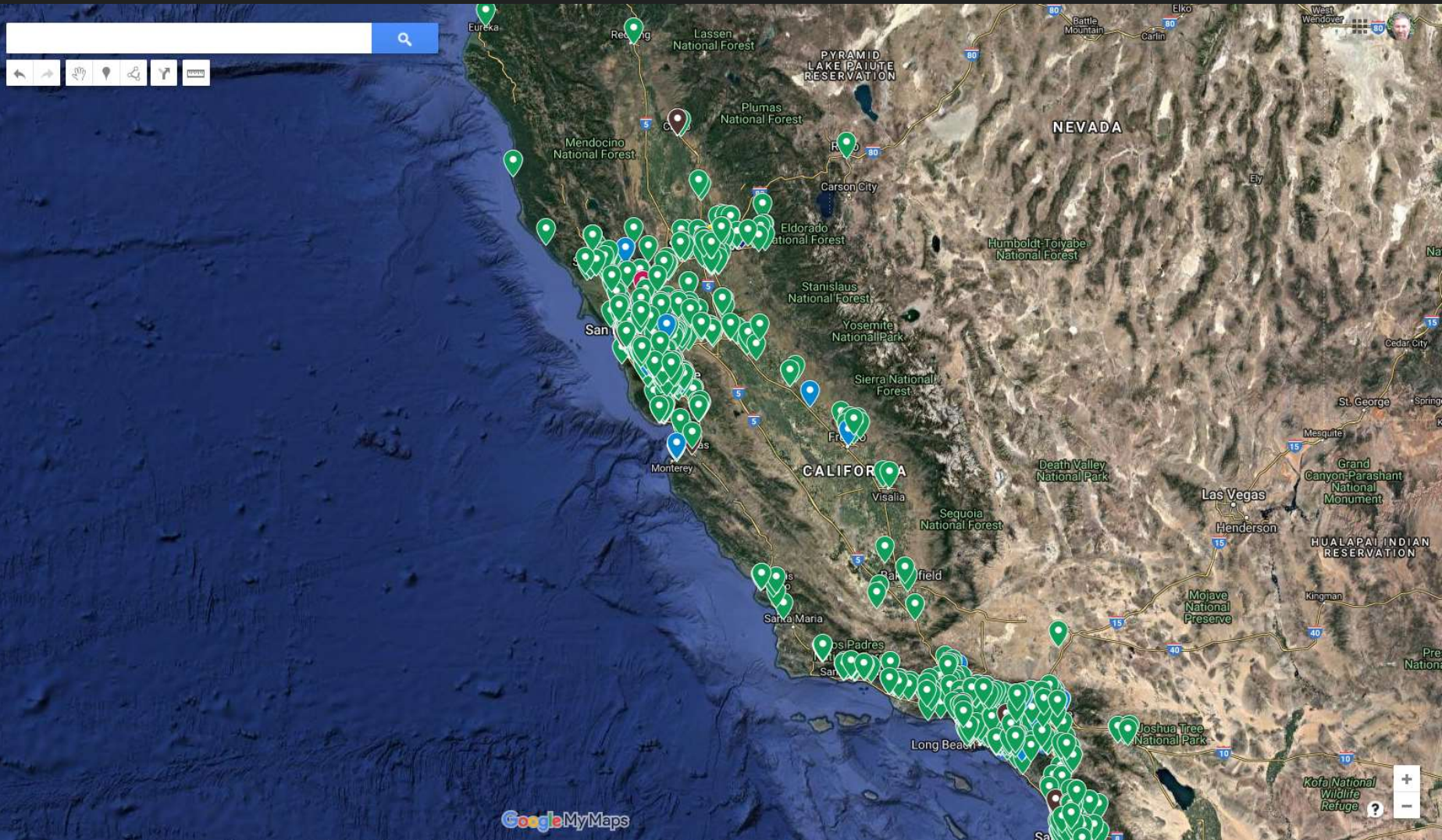
- 1 (1868)
- 2 (76)
- 3 (19)
- 4 (12)
- 5 (9)
- 6 (5)
- 7 (3)
- 8 (4)
- 11 (1)
- 15 (2)
- 17 (1)

☒ Untitled layer

Import

Add places to this layer by drawing or importing data. [Learn more](#)

☐ Base map



EV charging: California charging stations - Based on few days data from an EV fleet.

Untitled map
5 views

All changes saved in Drive

Add layer Share Preview

Charging-Location-2.csv

Stylized by cars

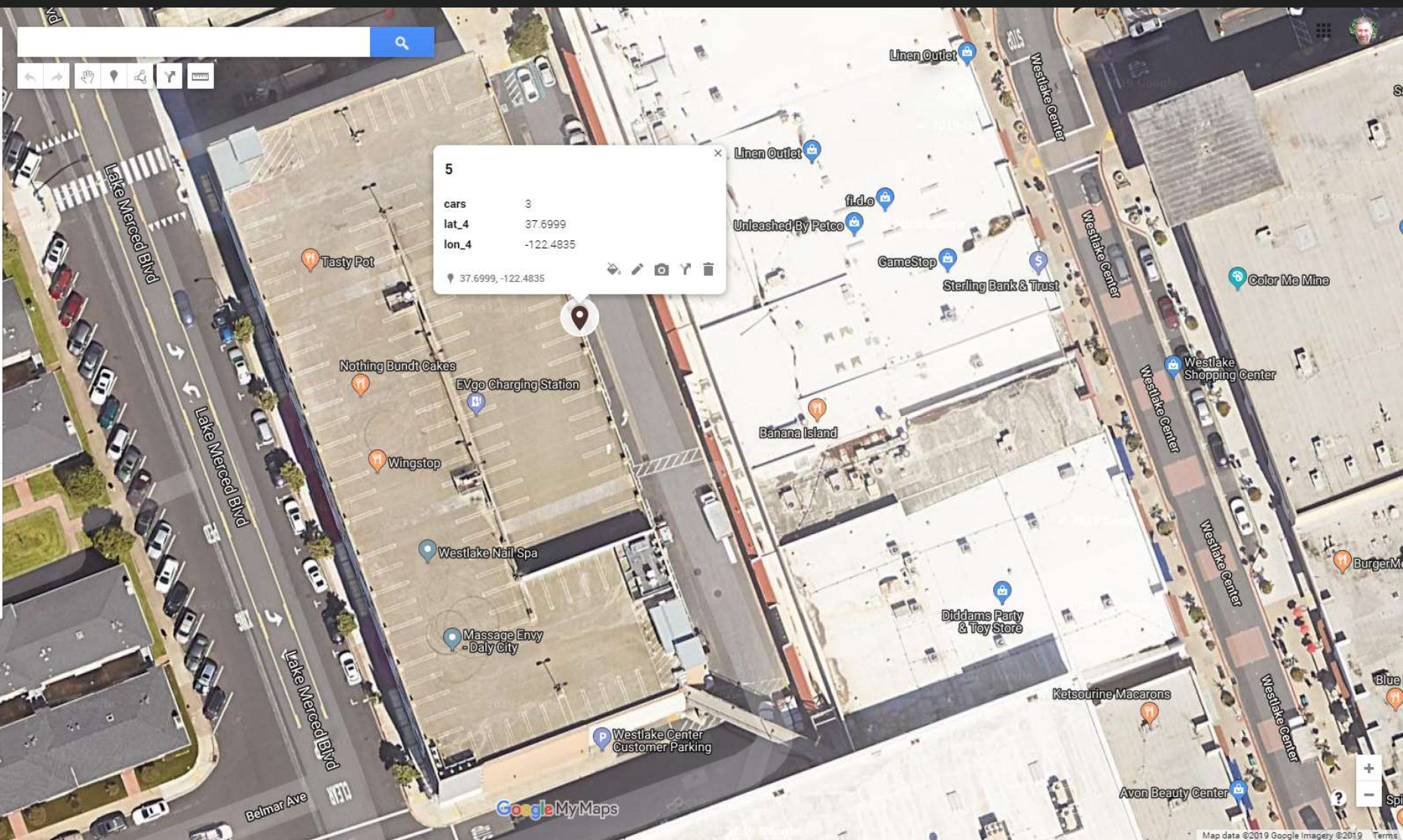
- 1 (1868)
- 2 (76)
- 3 (19)
- 4 (12)
- 5 (9)
- 6 (5)
- 7 (3)
- 8 (4)
- 11 (1)
- 15 (2)
- 17 (1)

Untitled layer

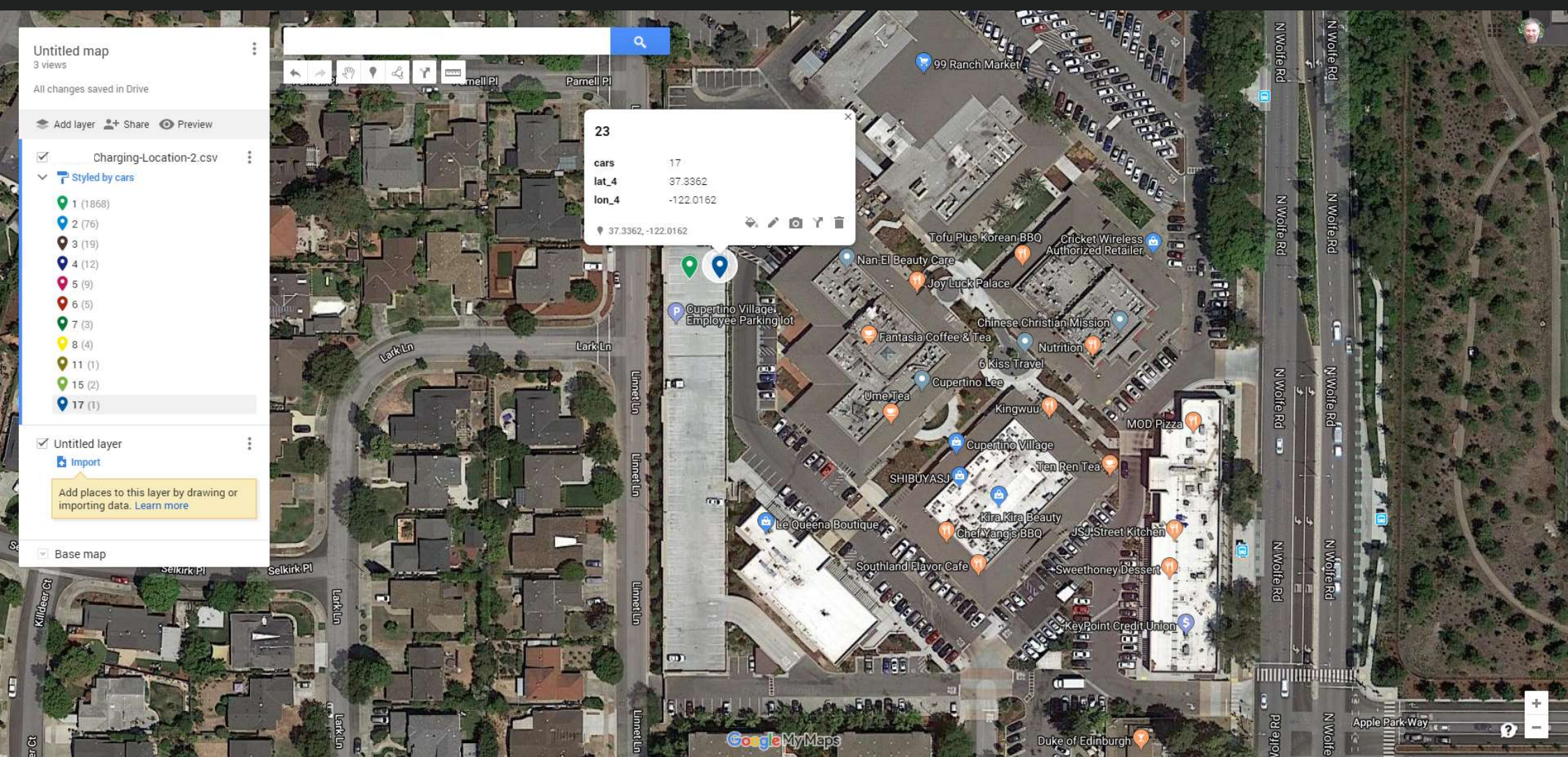
Import

Add places to this layer by drawing or importing data. [Learn more](#)

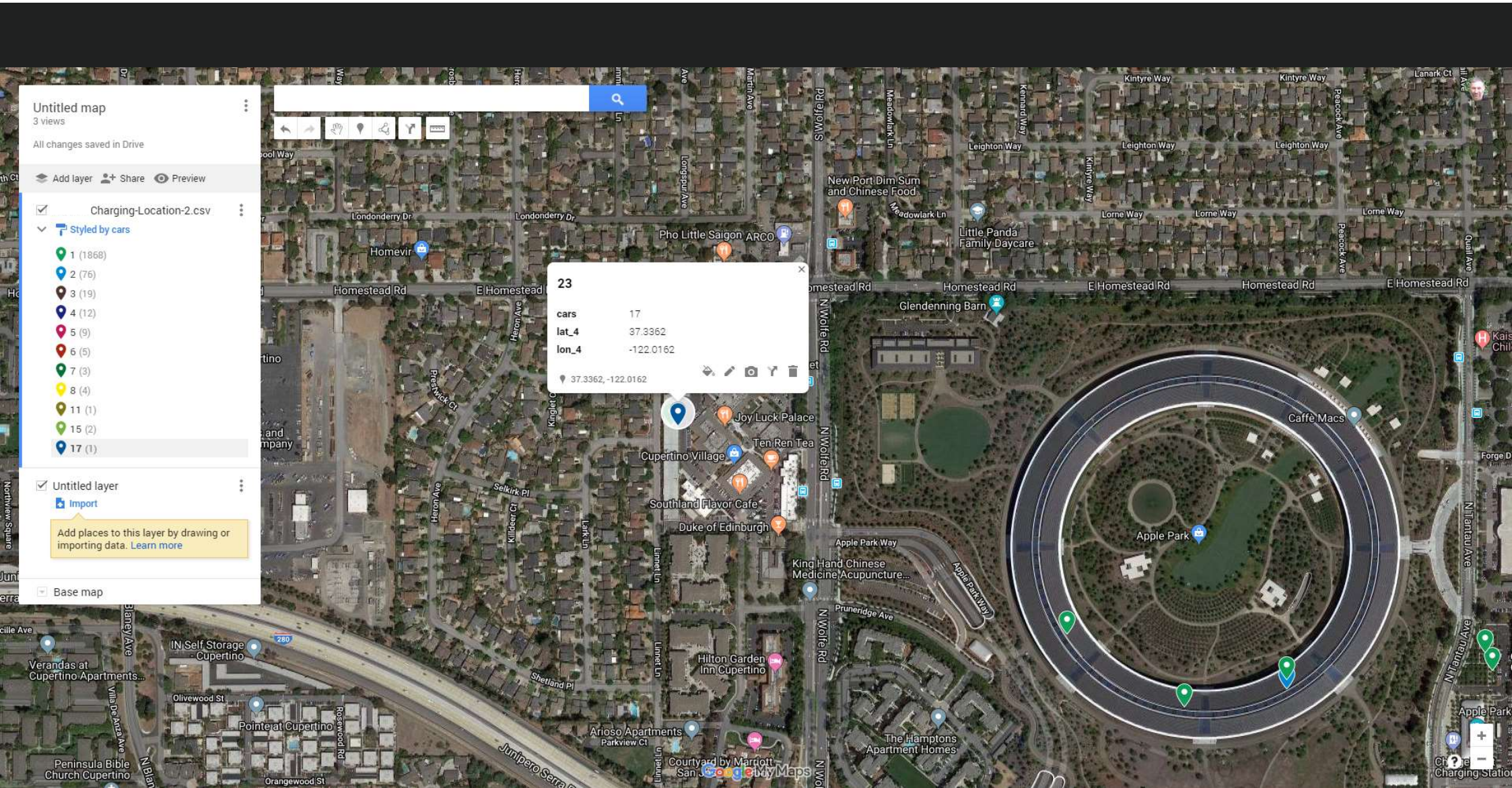
Base map



EV Charging: Parking lot with charging posts



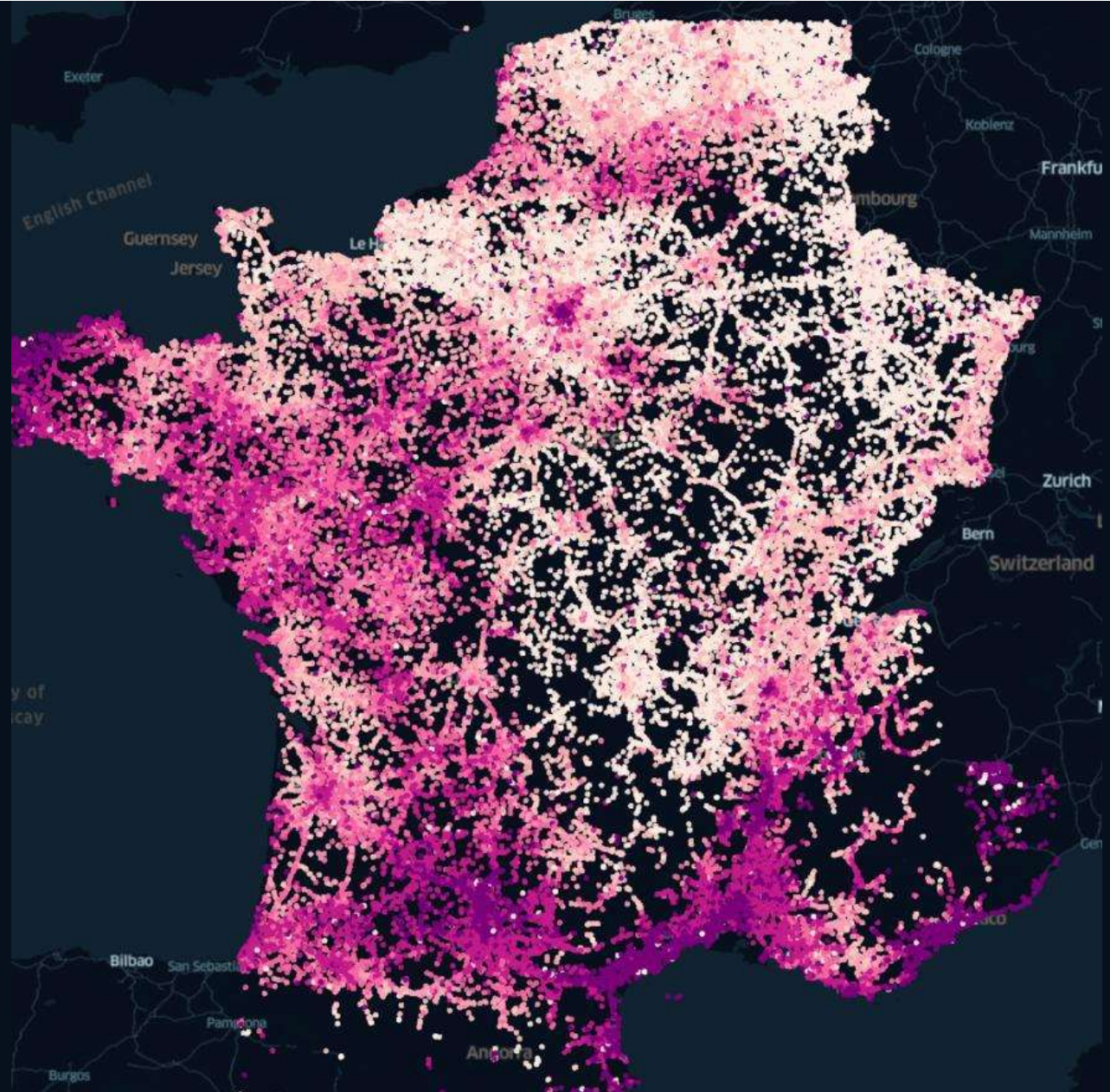
EV Charging: Employee parking lot - 17 vehicle identified charging in this location.



EV Charging: Apple campus

Temperatures in France

Based on Vehicle
External Temperature
data, measured in
September 2019 (1 hour
of data)





Enabling Privacy & Regulation Compliance

 Right to consent

 Right to erasure

 Right to access

 Right of transparency

 CCPA "Do not sell my personal information"



APPI

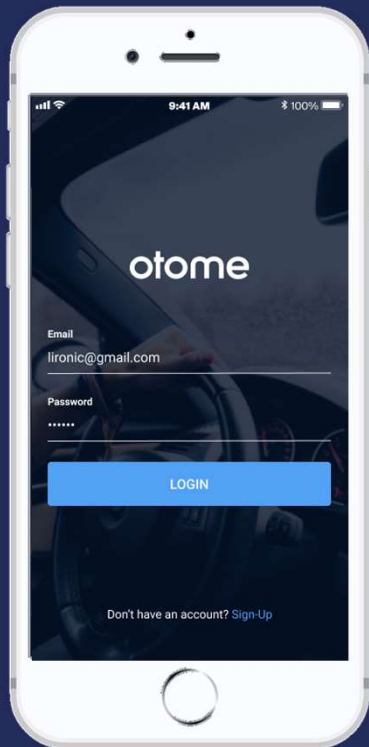


GDPR



CCPA

EV Charging Demo

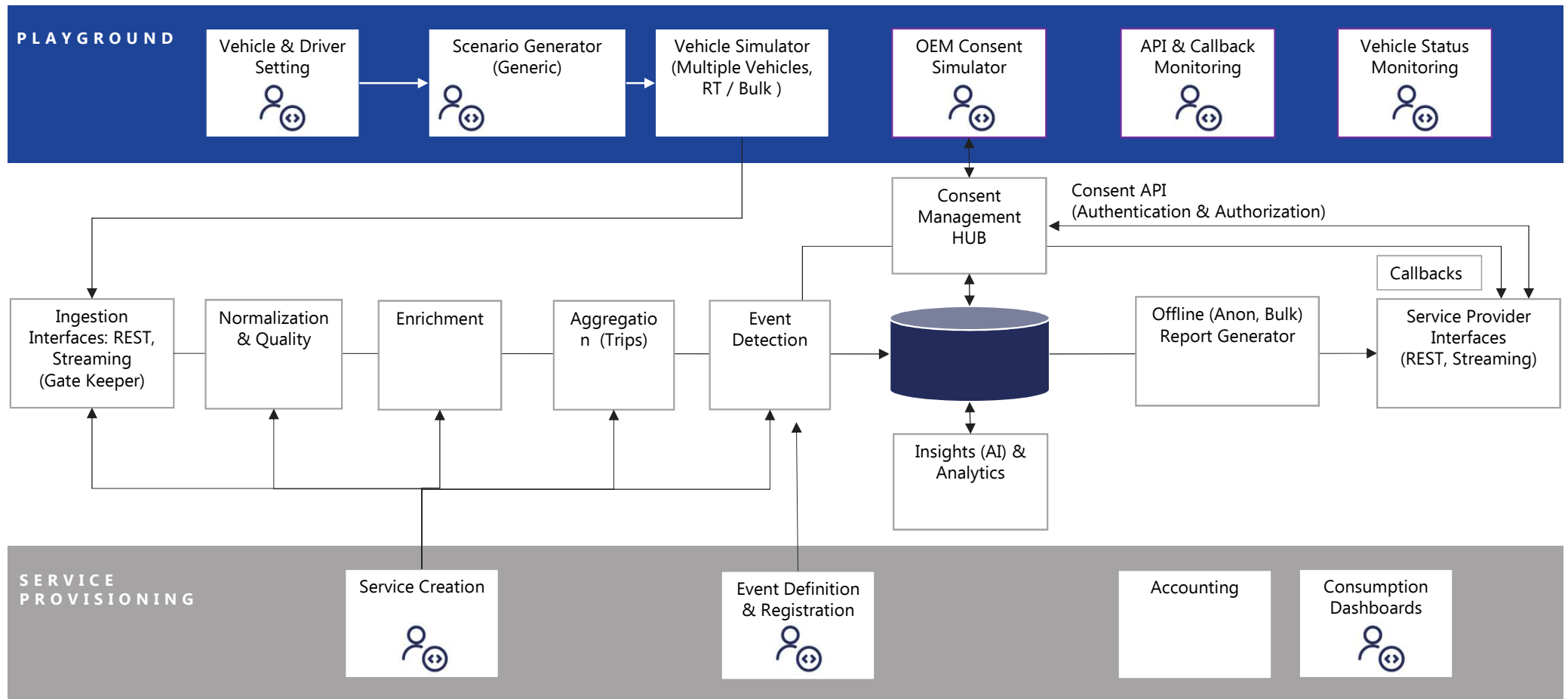


otonomo

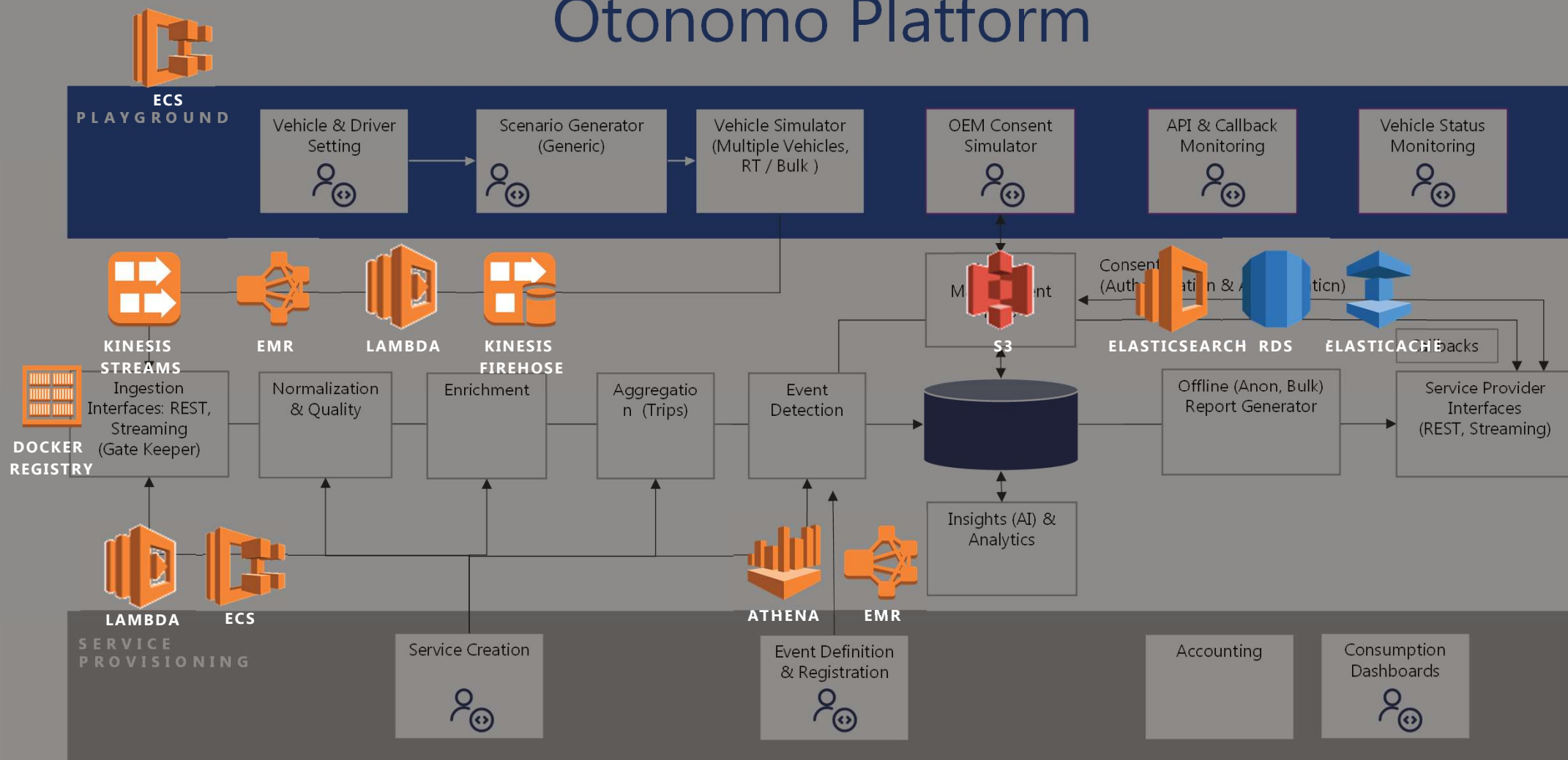
CONFIDENTIAL



Otonomo Platform



Otonomo Platform



Scale

PROCESSING OVER

18M

Vehicles

TRACKING

311B

KM/year

OPERATIONAL REGIONS



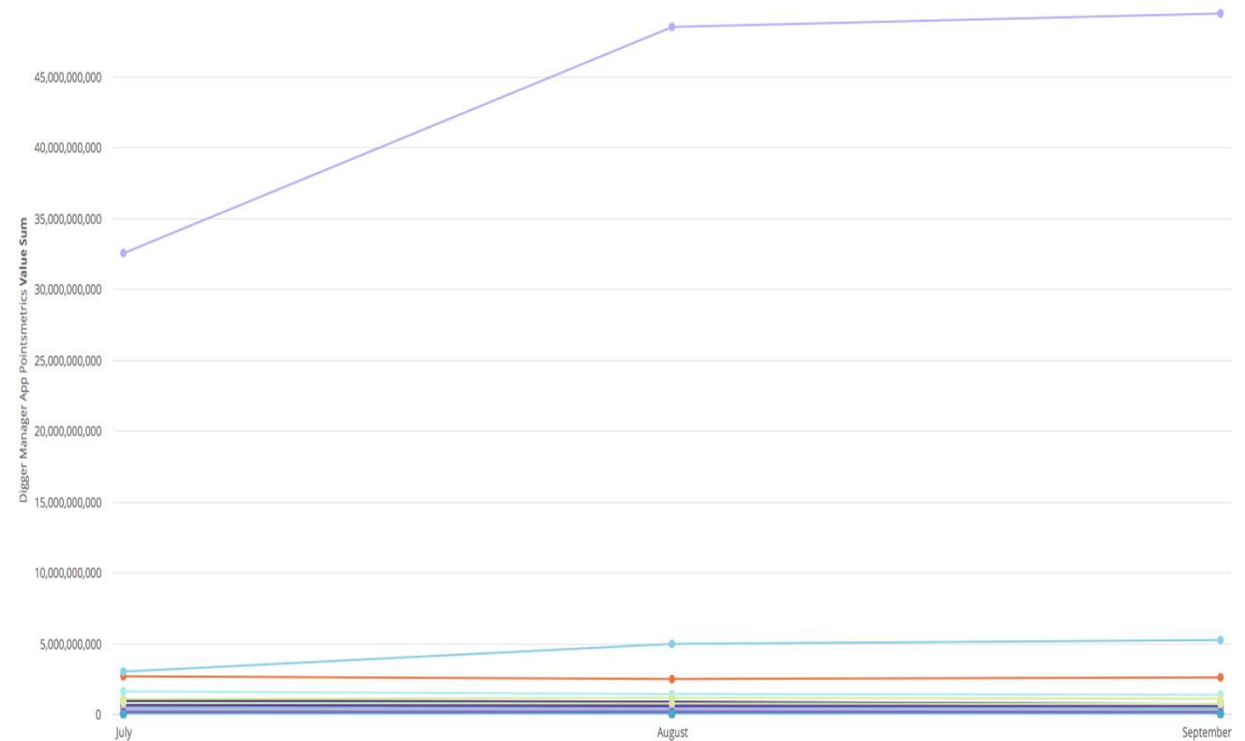
- EMEA
- US
- APAC



Data ingested from one OEM - ~2B points daily!

Scalability

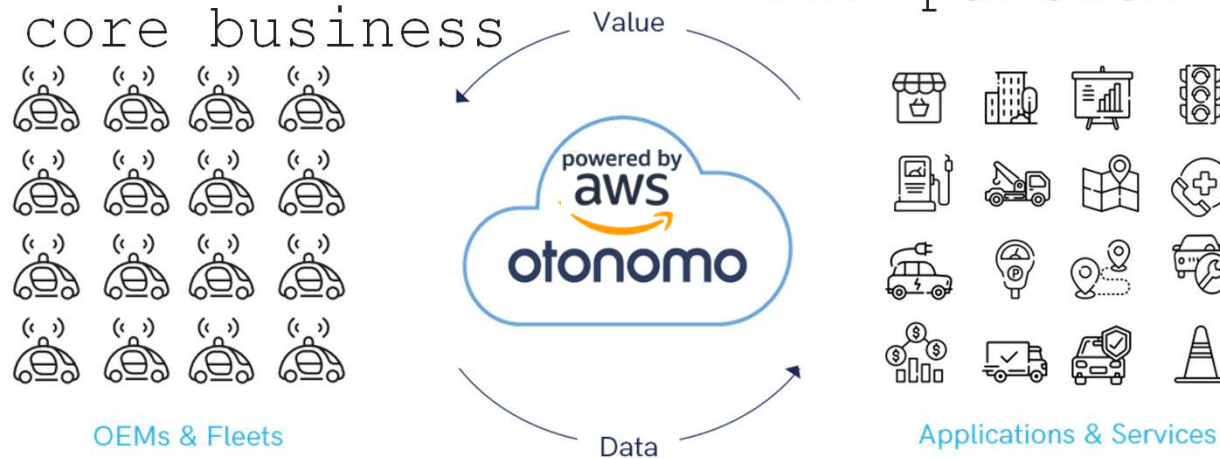
Growth of 2X of
processed data
points within 1
month!



AWS Partnership is Strategic for

Otonomo

- Supporting OEM privacy requirements - EU & US instances
- Fast time to market
- High scale & independent scalability
- Focus on core business
- Working with the account team and global BD organization on implementing into the AWS connected vehicle reference architecture
- APN partner since 2019



An aerial photograph of Tokyo, Japan, featuring a dense urban landscape with numerous skyscrapers and residential buildings. In the background, the iconic Mount Fuji is visible, its snow-capped peak rising above the city. The Tokyo Tower is also prominent on the right side of the image. The sky is a mix of blue and grey, suggesting an overcast day.

otonomo

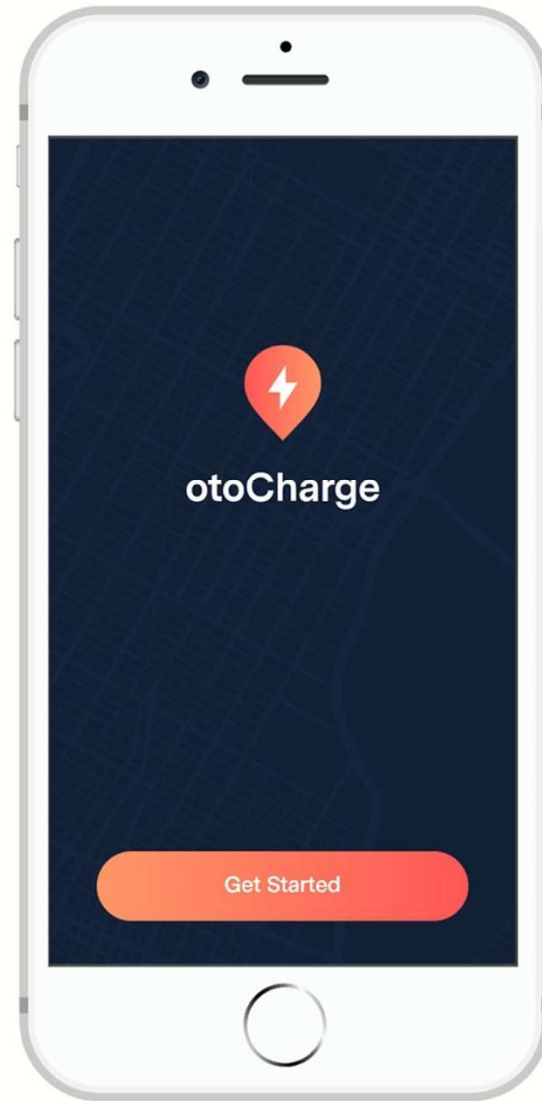
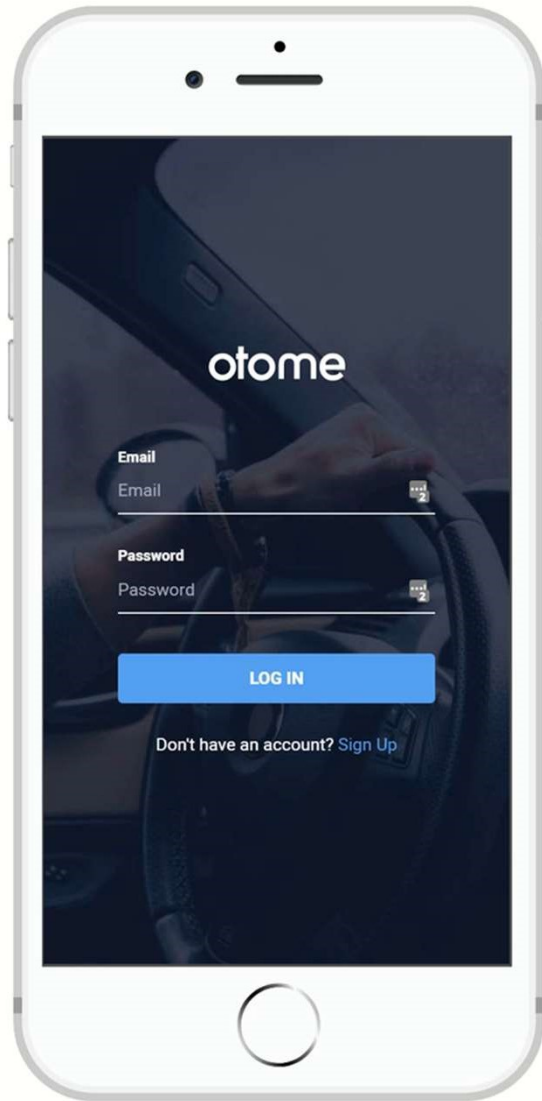
AUTOMOTIVE DATA SERVICES PLATFORM

Thank You

AMIR FREUND, CHIEF STRATEGY OFFICER

amir@otonomo.io

CONFIDENTIAL



Car & Route Configurations

Choose a Car



Electric
OTNMPHAW072CL54U9



Gasoline
OTNM1GHM0192M3P73

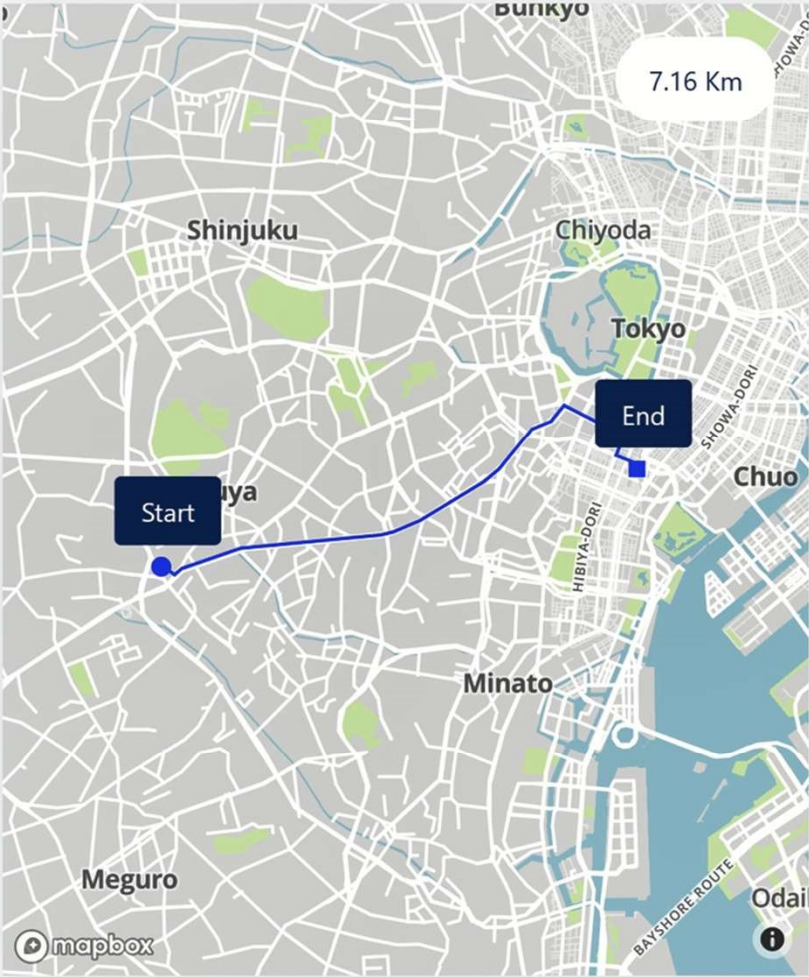
Choose a Route

Start *

● Breakfast Tokyu Stay Hotel, 東京都, 東京都, Japan

End *

■ 新橋駅 (Shimbashi Sta.), 新橋2-17-14, 東京都, 東京都



Next

Ownership Change

When the Car changes hands what happens to the data?



Japan APPI & EU GDPR

Regulation

- **Japan:** The Act on Protection of Personal Information (APPI) applies to operators in Japan and to operators located outside of Japan which provide goods or services to individuals and entities in Japan and which process their personal information
- **EU:** The General Data Protection Regulation 2016/679 (since 25 May 2018) and in addition the respective national data protection laws
- **For Otonomo:** Being a "Controller" (No "Processor" in APPI), the amount of adaptation from GDPR to APPI is minimal

Japan / EU Adequacy

- **The EU Commission and Japan's** central data protection authority have agreed to recognize each other's data protection systems as "equivalent."
- **For Otonomo:** Simplified due-diligence once complied with one of the standards and flexibility in data storage locations

